

# THE PENNINE FORE

Huddersfield HD1 5BE  
01484 538211





# THE PENNINE FORE

Huddersfield HD1 5BE  
01484 538211

## OWNERS MANUAL

FOREWORD	5
HOW TO USE THIS MANUAL	6
KNOWING YOUR PENNINE FORE.	7
ASSEMBLY	8
DRIVING	9
CAUTION TO PENNINE FORE DRIVERS	10
MAINTENANCE AND STORAGE OF YOUR "FORE"	11
IN CASE OF EMERGENCY	13
BATTERY MAINTENANCE AND CHARGING	14
APPENDIX AND TECHNICAL SPECIFICATION	16
RECHARGEABLE BATTERIES GUARANTEE	17



# ***FOREWORD***

Thank you for choosing a Pennine Fore.

To ensure the enjoyable and trouble free operation of your new vehicle, we urge you to read this manual carefully and follow its recommendations.

We wish to assure you of our continuing interest in your golfing pleasure and complete satisfaction in your vehicle. Should you require any further assistance, please remember that your agent is ready to help you with your needs.

PENNINE RADIO LIMITED  
HUDDERSFIELD HD1 5BE

# ***HOW TO USE THIS MANUAL***

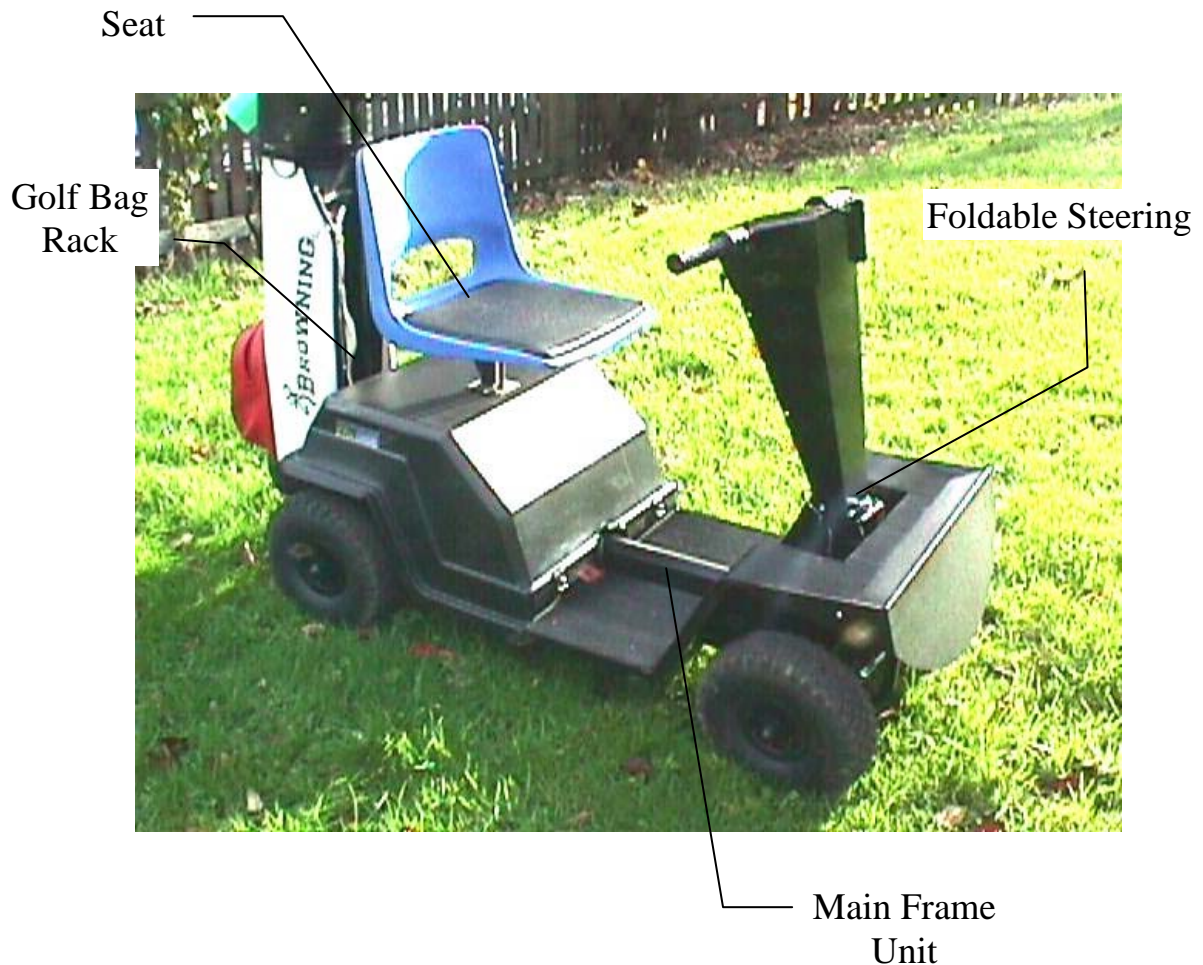
- Keep this manual in a safe place as a permanent and convenient reference.
- The specifications and descriptions in this manual are accurate at the time of printing but, because of our policy of continuous product improvement, we reserve the right to make changes in appearance and specification at any time without notice and without incurring any obligation.
- Should you sell your Pennine Fore, please leave this manual with the vehicle. The next owner will also require the information.
- Throughout the manual you will find **WARNINGS**, **CAUTIONS** and **NOTES**.
- **WARNINGS** remind you to be especially careful to avoid possible personal injury.
- **CAUTIONS** are given to prevent you from making an error that could damage your vehicle.
- **NOTES** are suggestions that will help you to make the best use of your vehicle.

# ***KNOWING YOUR PENNINE FORE.***

Your Vehicle has been designed to be assembled or dismantled as quickly and effortlessly as possible. It will arrive in six parts: -

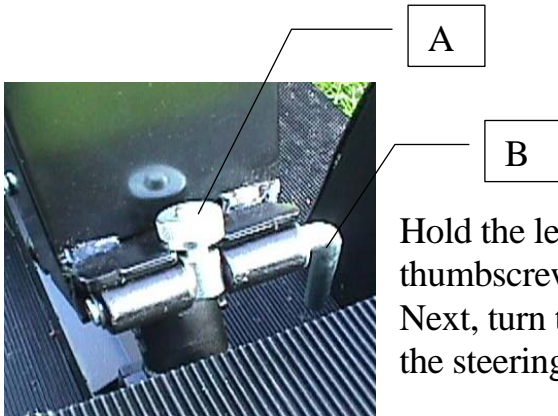
1. Foldable Steering Unit
2. Main Frame Unit
3. Seat
4. Batteries (two)
5. Golf Back Rack
6. Battery Charger (Not shown).

Also included are Owner's Manual, Warranty Card and two keys.



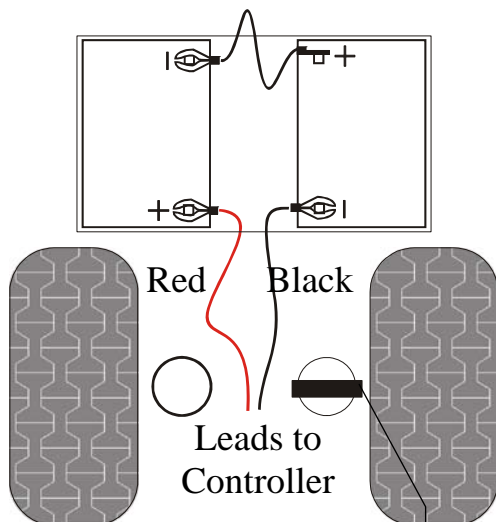
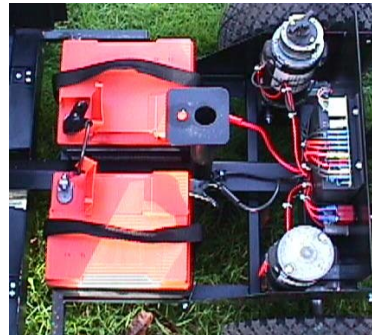
# ASSEMBLY

Lift the steering column from its folded position to the upright position.



Hold the lever "B" horizontal then drop the thumbscrew "A" into the slot and tighten it. Next, turn the lever "B" anticlockwise to secure the steering column in its upright position.

Hinge the battery cover forward, and then fit the batteries into the frame.



Connect the batteries ensuring that all connections are secure.

Electronic parking  
Brake Switch  
Clockwise = Off

Close the battery cover and place the seat in position.

Assemble your golf bag and the bag rack at the rear of main frame unit.



## ***DRIVING***

1. **WARNING** Ensure the Electronic brake switch is turned to the ON (Anti-Clockwise) position and is functional before driving.
2. Sit comfortably on the vehicle with both feet on the footplate.  
**WARNING** Do not attempt to drive unless both feet are on the footplate.  
Leg injuries could be caused should your shoe studs catch in the turf whilst the vehicle is in motion.
3. Insert the ignition key into the switch. Then turn the key 90 degrees to the right.  
**NOTE** To immobilise the vehicle turn off the ignition switch and remove the key.
4. Select the direction of motion by means of the rocker switch that is mounted adjacent to the ignition switch. Pressing the top of the switch is forward and the bottom of the switch is Reverse.
5. Accelerate gradually and control your speed by using the Twist Grip situated on your right handlebar (The maximum. speed is approximately 7mph).  
The motors will act as a brake when the vehicle is driven down a steep gradient and regenerate electricity in doing so.

# ***CAUTION TO PENNINE FORE DRIVERS***

Your vehicle has been designed for use on courses having rough terrain. It is of robust construction and has a low centre of gravity. Following these recommendations should ensure that your driving is trouble free.

1. Always incline your body forward when driving up a steep gradient.
2. Avoid driving at an angle when negotiating a gradient.
3. Endeavour to accelerate and decelerate gradually.
4. Never make sharp turns at speed.
5. Never leave your vehicle unattended without having first removed your Ignition Key.

## **6. BEFORE PUSHING YOUR VEHICLE**

Switch the Key to the off position and switch the Electronic Parking Brake Switch off (clockwise), to put the vehicle into a "Free-Wheel" mode. Never push or tow the vehicle at greater than walking speed

7. The Pennine Fore is fitted with a battery indicator to inform the current state of the batteries.  
When fully charged batteries are first connected to the cart the right hand light will show and as the power is used then the light will move from right to left, turn red and eventually flash when the batteries are empty.
8. Below the indicator are two switches the first being a horn to warn other people of your presence and a switch marked Slow and Fast.
9. The slow position of the switch restricts the top speed of the cart and should be used in confined areas or where there are other people.  
The Fast position allows the cart to go at full speed on the safety of the open course

*Ignoring these instructions will irreparably damage your gear boxes and void your guarantee.*

# ***MAINTENANCE AND STORAGE OF YOUR "FORE"***

Your "Fore" is designed to operate with the minimum servicing. However, the following notes should assist you in maintaining your vehicle and ensuring a trouble free performance.

## **BATTERIES**

The batteries must be recharged before the vehicle is required to be used.

## **TYRE PRESSURES**

Should be maintained at 25lbs/ins<sup>2</sup> maximum 20lbs/ins<sup>2</sup> minimum.

**WARNING Do not over inflate.**

## **STORAGE**

Should be in the dry.

## **START THE SEASON**

By applying a little light oil or grease to the steering swivel, seat pillar and bag stand base. Check that all wheel bolts are tight and all electrical connections are clean.

## **WATER**

**WARNING** If the machine become very wet ensure that all the electrical connections and equipment are thoroughly dry before connecting the batteries. Hosing the machine with water is not recommended.

## **WD40**

Do not use WD40 or any other similar product on any of the carts electronics.

It is liable to damage the circuit boards. Use of this kind of liquid will

**INVALIDATE THE GUARANTEE** on the cart.

# MAINTENANCE AND STORAGE Cont.

## MOTORS

The electric motors use carbon brushes to feed energy to their rotating parts. These brushes require occasional replacement. If the cart is used normally it is recommended that the brushes are replaced every 18 months.

1. Disconnect the batteries then remove the electrical connector from the motor.



2. Slide the brush retaining cover down so it can be removed

3. Remove the worn brush



replace it.



4. Replace the brush retaining cover and then refit the electrical connector.

Repeat this for the other brush on the motor and then for both brushes on the other motor.

## ***IN CASE OF EMERGENCY***

1. Should your vehicle be stuck in a deep rut and the Motors accidentally put into a "stalled" situation, the controller will protect the motors from damage due to overloading by shutting down the system. It will, after a few moments, reset automatically, but in order to get out of the rut you **MUST** dismount. Switch the Key to the off position and switch the Electronic Parking Brake Switch off (clockwise), to put the vehicle into a "Free-Wheel" mode and push or pull your "Fore" from the rut. Switch the Electronic Parking Brake Switch on (anti-clockwise) and switch the Key on again then return to normal driving.
2. If for any reason you want to push your vehicle from the golf course the following procedure should be adhered to.
  - a) Switch off the ignition.
  - b) Switch the Key to the off position and switch the Electronic Parking Brake Switch off (clockwise), to put the vehicle into a "Free-Wheel" mode and proceed with caution from the course.
3. Should your vehicle suffer a sudden power loss.
  - a) Switch off the ignition, remove seat, and open the cover to reveal the batteries and motors. Check that all the connections to the batteries and motors are secure and free from dirt or moisture.
  - b) Replace the cover and the seat. Switch on the ignition and check for power loss.
  - c) If the problem persists, switch the Key to the off position and switch the Electronic Parking Brake Switch off (clockwise), to put the vehicle into a "Free-Wheel" mode, then proceed with caution to the clubhouse and contact your agent.

Note: Never push or tow the vehicle at greater than walking speed as this will permanently damage the motors and void any guarantee.

# ***BATTERY MAINTENANCE AND CHARGING***

Your Batteries are the modern dry type requiring neither acid nor distilled water. They should always be stored upright in a dry environment, as a damp atmosphere will encourage the batteries to discharge.

Never leave the batteries in a discharged state. Always recharge them whenever your vehicle has been used to do eighteen holes.

The charger should remain connected and switched on at any time that the vehicle is not in use between games (NOTE: see "Battery storage" for overwintering or extended periods of non-use). It will automatically cut out when the Batteries are fully charged then cut in again when there is a small voltage drop, this will keep them fully charged while using very little electricity. Caution should be taken to ensure that the charger ventilation grills are not obstructed in any way. If they are it will create overheating and subsequent charger failure. Do no use in a wet environment.

## **CONNECTING THE CHARGER TO BATTERIES REMAINING ON THE "FORE"**



Remove the ignition key and insert the charger output plug into the socket located at the rear of the vehicle.

## **CONNECTING THE CHARGER TO BATTERIES REMOVED FROM THE "FORE"**

The battery charger is designed to charge both batteries simultaneously while connected in the same way as when they are mounted on your vehicle. They should never be charged singly or connected any other way.

**WARNING.** In order to prevent shorting always clip the battery cross lead to its fixed end when removing the batteries from your vehicle. **Never** place metal objects on top of the batteries as this could cause a severe shock or fire hazard.

Plug the OVCU (Off Vehicle Charging Unit) into the charger output socket. Connect batteries together using the battery cross lead.

Clip the red positive (+) OVCU lead to the positive (+) battery terminal.

Clip the black negative (-) OVCU lead to the negative (-) battery terminal.

## CHARGING THE BATTERIES

**Very Important** New batteries should be given a minimum of an overnight charge before first use and always recharge the batteries after use.

A separate instruction sheet will have been provided with your battery charger. Please refer to this for the detailed charging instructions.

**CAUTION.** The Charger should never be connected to your vehicle with the mains supply switched off as this will cause the batteries to slowly discharge through the charger circuit.

***Note: If you charge the batteries off the cart ensure that the red lead is connected to the + terminal and the black is connected to the – terminal.***

### GENERAL NOTES ON BATTERY CHARGING.

After playing 18 holes the time required to charge the batteries would be approximately twelve hours.

Avoid regular shallow discharge of the batteries, for example recharging after only 9 holes or very short journeys, as the batteries are of the deep discharge type. It is also very important to avoid partially charging your batteries.

### BATTERY STORAGE

For winter storage, recharge the batteries after their last use. Remove them from the cart and store them in a warm dry place. In order that the maximum life be retained in your batteries it is advisable to charge them for 24 hours once a month during periods of non-use. Remember to recharge the batteries fully before their next use.

# ***APPENDIX AND TECHNICAL SPECIFICATION***

## **TECHNICAL SPECIFICATION**

	FORE II	FORE III
Width	720mm (28½")	720mm (28½")
Length	1350mm (53")	1350mm (53")
Turning Circle	4570mm (15')	4570mm (15')
Weight (ex Batteries)	51.5 Kg	51.5 Kg
Battery Weight	45 Kg	45 Kg
Battery Type	2 x 12V 80 Amp/Hr Dryfit (24V system)	2 x 12V 80 Amp/Hr Dryfit (24V system)
Maximum Speed	9.64 Km/H (6 Mph)	9.64 Km/H (6 Mph)
Speed Controller	Fully Proportional Solid State	Fully Proportional Solid State (High Power Version)
Motors	2 x 24V EMD 400W	2 x 24V EMD 400W (With Higher Spec' Gearbox)
Tyres	4 x Pneumatic 330mm 5.00-4 4ply	4 x Pneumatic 330mm 5.00-4 4ply



# ***RECHARGEABLE BATTERIES GUARANTEE***

When PENNINE RADIO Ltd supply rechargeable batteries they are normally covered by the battery manufacturers own guarantees.

When rechargeable batteries are not covered by the battery manufacturers guarantee PENNINE RADIO Ltd will guarantee the battery for a period of 12 months from the date of manufacture on a proportional basis.

The words "Proportional Basis" mean that the price of replacement from PENNINE RADIO Ltd will be reduced in proportion to the remaining period of the guarantee after the battery ceased operating normally. The reduction will reduce to zero after 12 months.